

Catholic Education Tasmania

Place Vision

Our Lady of Lourdes School

18/04/2023



We acknowledge the Traditional Custodians of Country, and recognise their continuing contributions to placemaking and place, with their strong connections to land, sea, culture and community. We pay our respects to Elders past and present.

Authors: Valli Morphet
Sally Ngai

Version: 2.0 for Catholic Education
Tasmania 18/04/2023

All information, ideas and concepts contained within this document is confidential. No part of this work may be disclosed, reproduced, or copied in any form or by any means without the prior written consent of Village Well.



Contents

Introduction 4

About this report 4

Overall Objectives 4

Engagement and site observations 5

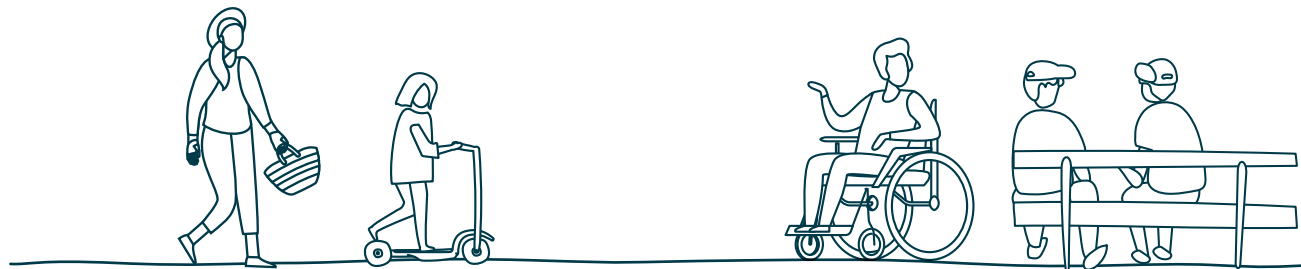
Key priorities 5

Key site observations 5

Our Lady of Lourdes place vision 6

Vision statement 7

Place principles 8



Introduction

About this report

This report contains a page of engagement summary and a place vision and principles for Our lady of Lourdes Catholic School.

The report builds off the Workshop Summary Report also produced for Catholic Education Tasmania by Village Well. This report gives a summary of workshop results, place vision, principles and high level actions that will support delivery of the vision on the ground.

Masterplan

On the 21st, 22nd and 23rd of March, Village Well held workshops at three Catholic Education Tasmania schools in Northern Tasmania.

The workshops contained activities that identified the satisfaction with certain aspects of the school, it's strengths and challenges, and building a shared vision in groups.

Overall objectives

The main objective of the Masterplan Vision was to test an experience-led approach to masterplanning processes for Catholic Education Tasmania.

By engaging students, staff and parents, the process identifies the key strengths and challenges of each school.

The resulting engagement data, visions and principles are intended to guide further works on the masterplans of each school by providing a 'true north' to check decisions against.

Before implementing any infrastructural or landscape changes recommended in this report, Catholic Education should be notified.



Engagement & site observations

Site visit vision workshop was delivered on 22 March 2023. Key findings have been synthesized into the following.

Key priorities

What is loved

1. People and culture
2. Sport and sport facilities
3. Various spacious facilities
4. Playground equipment
5. Play amenities

Challenges

1. Protected outdoor areas
2. Lack of trees/nature
3. Not enough nature play
4. Not enough creative spaces
5. Lack of bins

Key site observations

Place challenges

- Corridors get congested during peak times
- The office is separated from the entrance
- The spaces feel extremely regimented
- The outdoor recreational spaces are exposed to weather conditions
- Main central gathering space is exposed
- Minimal artwork and colour
- Cultural expression is lacking
- More seating options needed
- Lack of trees and vegetation
- Bike track not fit for purpose or practical

Place potential

- Plant buffer or screen fencing for privacy and neighbor noise complaints
- Central gathering space needs some love
- Enhance cultural expression with community events and get kids involved in art
- More diverse spaces for calm/creative activities
- Create comfortable spaces with shelter and flexible seating

"It was a bit windy and beautiful at the same time."

"Sporty kids are well catered to but there is not much for creative kids. They are forced to sit on the concrete edge and make their artwork out of leaves or do their imaginary cooking."

"I don't think the outside reflects the diversity of our school."

"Basketball and netball courts are good – not too big or small and still have room to do other stuff!"

"The spaces you run around in aren't beautiful and you can trip over."



12 students & 9 adults

Place vision

Vision statement

Our Lady of Lourdes School; Where exploration and creativity enriches learning

The place vision statement provides an aspirational narrative to guide the future place experience for the school.

Our Lady of Lourdes creates a learning environment that not only embraces sustainability but fosters a sense of responsibility and stewardship among students, encouraging them to care for the natural spaces and resources around them.

The school's deep connection with culture and history can be seen through various events and activities celebrating the local community.

Art has become a seamless part of the buildings and campus, with murals, sculptures and mosaics that reflect the diverse cultures and traditions of the community, creating a sense of pride and belonging for students and staff.

With pockets of calm and quiet spaces throughout the campus, students can take a break from the hustle and bustle of school life and recharge.

Students are provided with a fun, engaging, and enriching outdoor experience that promotes their physical health and wellbeing. The spaces are less structured, sheltered and comfortable to allow for spontaneous play, outdoor learning and exploration.

The organic, natural, and sustainable spaces throughout the campus encourage students to connect with the natural world around them.

Trees, gardens, interesting play structures and outdoor seating areas are carefully placed throughout the campus contributing to the welcoming experience and providing students with opportunities to relax and reflect.



Place principles

The Place Principles are a 'true-north' guide which can help future decision-making and masterplanning work.

1. Organic, natural & sustainable

The campus embraces the beauty of nature and features nature play areas where students can have fun and explore the outdoors. Areas with loose play, such as logs, water, and stepping stones, offer a unique and sensory-rich environment and imaginative play.

The informal and organically formed landscape is not overly structured or rigid. The flowing lines, curves, and irregular shapes, mimic the way nature grows. Walkways made up of mulch and natural stone blend seamlessly into the environment, to create a more rustic and organic feel.

A thriving vegetable garden and composting is tended by the students, with the guidance of a volunteer assistant. Pride is taken in the planter boxes, showcasing the beauty of native plants and succulents that are scattered throughout the campus. Various initiatives, including a new solar panel roof, recycling incentives and collection bins located throughout the school encourage students to take an active role in caring for their school.

Quick win actions:

- Introduce natural, movable loose play parts that are changed regularly
- Planter boxes with seating ledges, with students responsible for care & maintenance

Longer term actions:

- Engage with a dedicated VA to set up a veggie garden and work with the students
- Incentivise students participating in recycling initiatives

2. Comfortable & sheltered

The welcoming campus is enhanced by the inviting outdoor spaces where trees serve as a natural and calming element, whilst providing shade.

Different types of seating, such as hammocks, benches, chairs, and picnic tables accommodate different activities and group sizes. The movable furniture dotted round the campus encourage socialisation and collaboration.

Quiet and reflective spaces include elements such as water features, quiet corners, and greenery further enhancing the comfortable and inviting atmosphere.

With the creative flexible seating and sheltered spaces outdoors, the school hosts events celebrating community, staff and parents, making the spaces dynamic and ever-changing.

Quick win actions:

- Provide movable furniture for social gathering and outdoor learning
- Provide cushions and picnic rugs in warmer months for easy flexible seating options

Longer term actions:

- Create outdoor quiet spaces with calming sensory features
- A flexible platform/stage for outdoor events
- Additional trees and sheltered seating space

3. Cultural & community expression

Our Lady of Lourdes has become well known for its inclusive and welcoming environment that celebrates its unique identity, heritage and cultural diversity.

Students take pride in showcasing artwork that reflects the many cultures and local traditions that make Devonport unique.

Changing artwork is displayed and hung on walls around the campus. Digital screens are provide in multiple location showcasing students visual art and photography.

First Nations sculptures and murals have been thoughtfully integrated into play spaces and student fingerprints can be seen and felt around the entire campus.

Quick win actions:

- Digital screens installed in multiple locations to showcase art and creative expression
- Fixed frames mounted outdoors on walls to showcase ephemeral artwork

Longer term actions:

- Invite local community members to participate in cultural celebrations, community activities and events
- Work with Indigenous members to explore the history and develop sculpture and murals to reflect First Nations appreciation at a deep level.



Phone: +61 3 9650 0080
admin@villagewell.org
villagewell.org

Level 1, 147 Cecil St
South Melbourne, VIC 3205
Australia

Registered Name:
The Trustee for GR Family Trust ATF
Dolphinium Pty Ltd

Trading Name:
Village Well

ABN: 63 744 123 532
ACN: 063 105 322

Melbourne | Sydney

